

RESEARCH ARTICLE

Open Access

Effectiveness and feasibility of early physical rehabilitation programs for geriatric hospitalized patients: a systematic review

Nienke M Kosse^{1*}, Alisa L Dutmer¹, Lena Dasenbrock², Jürgen M Bauer² and Claudine JC Lamoth¹

Abstract

Background: Old adults admitted to the hospital are at severe risk of functional loss during hospitalization. Early in-hospital physical rehabilitation programs appear to prevent functional loss in geriatric patients. The first aim of this review was to investigate the effect of early physical rehabilitation programs on physical functioning among geriatric patients acutely admitted to the hospital. The second aim was to evaluate the feasibility of early physical rehabilitation programs.

Methods: Two searches, one for physical functioning and one for feasibility, were conducted in PubMed, CINAHL, and EMBASE. Additional studies were identified through reference and citation tracking. To be included articles had to report on in-hospital early physical rehabilitation of patients aged 65 years and older with an outcome measure of physical functioning. Studies were excluded when the treatment was performed on specialized units other than geriatric units. Randomized controlled trials were included to examine the effect of early physical rehabilitation on physical functioning, length of stay and discharge destination. To investigate feasibility also non randomized controlled trials were added.

Results: Fifteen articles, reporting on 13 studies, described the effect on physical functioning. The early physical rehabilitation programs were classified in multidisciplinary programs with an exercise component and usual care with an exercise component. Multidisciplinary programs focussed more on facilitating discharge home and independent ADL, whereas exercise programs aimed at improving functional outcomes. At time of discharge patients who had participated in a multidisciplinary program or exercise program improved more on physical functional tests and were less likely to be discharged to a nursing home compared to patients receiving only usual care. In addition, multidisciplinary programs reduced the length of hospital stay significantly. Follow-up interventions improved physical functioning after discharge. The feasibility search yielded four articles. The feasibility results showed that early physical rehabilitation for acutely hospitalized old adults was safe. Adherence rates differed between studies and the recruitment of patients was sometimes challenging.

Conclusions: Early physical rehabilitation care for acutely hospitalized old adults leads to functional benefits and can be safely executed. Further research is needed to specifically quantify the physical component in early physical rehabilitation programs.

Keywords: Acute care, Rehabilitation, Hospital, Aged, Functional outcomes, Feasibility, ADL, Physical performance

* Correspondence: n.m.kosse@umcg.nl

¹University of Groningen, University Medical Center Groningen, Center for Human Movement Sciences, Groningen, The Netherlands
Full list of author information is available at the end of the article

Background

The rapidly growing population of old adults in Western countries has become a major concern for health care systems. Due to a poorer health status, old adults consume a disproportionate amount of medical care. In some European countries, more than 40% of patients admitted to the hospital for an overnight stay are aged 65 years and older, while their total share of the population is less than 20% [1].

Unfortunately, old adults admitted to the hospital are at severe risk of functional decline, both during hospitalization and after discharge [2,3]. A number of studies found that approximately 33% of the patients have severe functional deterioration at time of discharge compared to their status before hospital admission [3-5]. For patients 90 years or older this number even increases to 63% [4]. Functional decline during and after hospital stay has shown to be an important risk factor for nursing home placement [6,7].

The decline in functional capacity seems to be partly the result of the hospitalization itself, unrelated to diagnostic or therapeutic interventions. Older patients have decreased physiological and functional reserves that make them more vulnerable to the effects of bed rest and decrease in dietary intake, which both are highly prevalent during hospitalization. Due to immobilisation, muscle strength and aerobic capacity tend to decline rapidly. After only ten days of bed rest healthy old adults lose 12-14% of both their VO_{2max} and lower extremity muscle strength [8]. Without any voluntary muscle contractions muscle strength can even decrease by 5% per day [2].

Altogether, functional decline is a common problem that is significantly associated with negative outcomes such as institutionalization, re-hospitalization and subsequent mortality [3]. The primary focus of hospital care is treating acute and chronic illnesses. A physical rehabilitation intervention that may preserve physical function is often not part of the treatment. To preclude a rapid decline in physical function it is important that hospital programs are also directed explicitly towards activating the older patient early after hospital admission. Early physical rehabilitation might help to prevent decline in physical functioning arising from immobility and prolonged bed rest [9].

Over the years, several multidisciplinary and exercise types of early rehabilitation interventions have been studied. Previous studies showed that early rehabilitation programs improved both patient (e.g. physical functioning) and hospital outcomes (e.g. reducing costs) for acute ill geriatric patients [10,11]. However, an important issue not yet addressed in the current literature is the feasibility of in-hospital early exercise programs for acute geriatric patients. To start an early physical rehabilitation program,

knowledge of which patient population benefit from the program is required. Furthermore, it is important to know if there will be adverse events during early physical rehabilitation programs in terms of falls or other injuries and what the adherence rate of the patients will be during the treatment sessions. Therefore, the first aim of this review is to evaluate the effects of early physical rehabilitation programs on physical functioning of geriatric patients acutely admitted to a hospital. In this review early physical rehabilitation in acutely ill patients refers to physical therapy, occupational therapy, and physical exercises initiated immediately upon achieving physiologic stability and continued throughout the hospital stay. Such activities start within 1 or 2 days after hospitalization. The second aim of the present review is to evaluate the feasibility of early physical rehabilitation programs in the hospitalized geriatric patients.

Method

Search strategy

A systematic literature search was conducted in three electronic databases, PubMed, CINAHL, and EMBASE in August 2013. Keywords used to perform the search were: "aged" or "elderly" or "geriatric", "hospital" or "hospitalized", "exercise" or "rehabilitation", "ADL" or "physical functioning" or "mobility" or "physical performance", and "acute" or "acutely". The articles included were randomized controlled trials (RCT), written in English, including participants aged 65 years or older who were acutely admitted to the hospital. The interventions investigated in the articles needed to include a physical exercise part with a physical functioning measure as outcome. Studies were excluded if the included patients required treatment on a specialized unit other than an acute geriatric unit or when the evaluated intervention aimed at a specific disorder or surgical process. Articles about the feasibility of early physical rehabilitation of inpatients were retrieved by adding the keywords "feasibility" or "feasible" or "adherence rate" or "safety" to the keywords mentioned above. The articles about feasibility had the same inclusion and exclusion criteria as the articles addressing physical functioning with the exception that also non randomized controlled trials were included. For the inclusion process title and abstract were examined and when necessary the full article was obtained and read. Additional studies were identified through reference and citation tracking. Two reviewers independently screened title, abstract and full text. Disagreement about inclusion of articles was resolved by discussion and consensus between the two reviewers.

Data extraction and analysis

Data were extracted against pre-defined categories by two researchers. The data compiled from the studies included information on: study design, characteristics of

participants and setting, the intervention and control group treatment, time of assessment, ADL, physical performance, length of stay and discharge destination. Furthermore, the feasibility outcomes were the ability to enrol patients into the rehabilitation program, and the adherence rate and safety of the patients during the therapy sessions. The information extracted from the articles was organized into tables and systematically compared.

Methodological quality

The methodological quality of the included RCTs was assessed using the Delphi scale [12]. The Delphi scale is a quality assessment tool for RCTs and has shown to be valid and reliable [13]. It consists of 9 different criteria which can be scored positive, negative, or unclear (“yes”, “no”, and “don’t know”). One point was given for each “yes” and zero points for each “no” or “don’t know”, the total quality score ranged from 0 (low quality) to 9 (high quality).

Results

Selected studies

The literature search for physical functioning yielded a total of 772 papers (Figure 1). After removing 765 articles based on title and abstract, 9 articles were qualified for full text reading. Four articles were removed after full text reading and ten articles were added after reference checking. The remaining 15 articles, describing 13 studies, were included to this review. The search for feasibility studies yielded 50 papers. After removing 47 articles by title, abstract and full text reading and adding one article after reference checking, four studies were included

for the feasibility assessment. The article of Laver et al. [14] was included in both the physical functioning and the feasibility section. PRISMA guidelines were followed in this systematic review [15].

Methodological quality

In Table 1 the quality scores on the Delphi Scale for the different RCT studies are reported. Total quality scores ranged from 3 to 7 with a median score of 5. The methodological quality was moderate for most studies. Randomization methods and eligibility criteria were clearly defined in all 13 studies. The studies scored particularly low on blinding the assessor, the care provider and the participant. The Delphi scores were good for the concealed treatment allocation, the similarity of the intervention and control groups at baseline and the clarity of the specified eligibility criteria.

Inclusion criteria and patient characteristics

Table 2 summarizes the characteristics of patients, study settings, early physical rehabilitation programs and outcomes of the included RCT studies in this review. The mean age for patients admitted to acute care in the hospital for a general medical condition varied between 78 and 86 years old. The most common reasons for admission were cardiac problems, respiratory problems, gastrointestinal problems, neurological problems, infections and injuries caused by a fall. The living situation of the patients before they were admitted to the hospital varied, patients came from nursing homes and other types of institutionalised care or from the community where they lived alone or with family. However, the

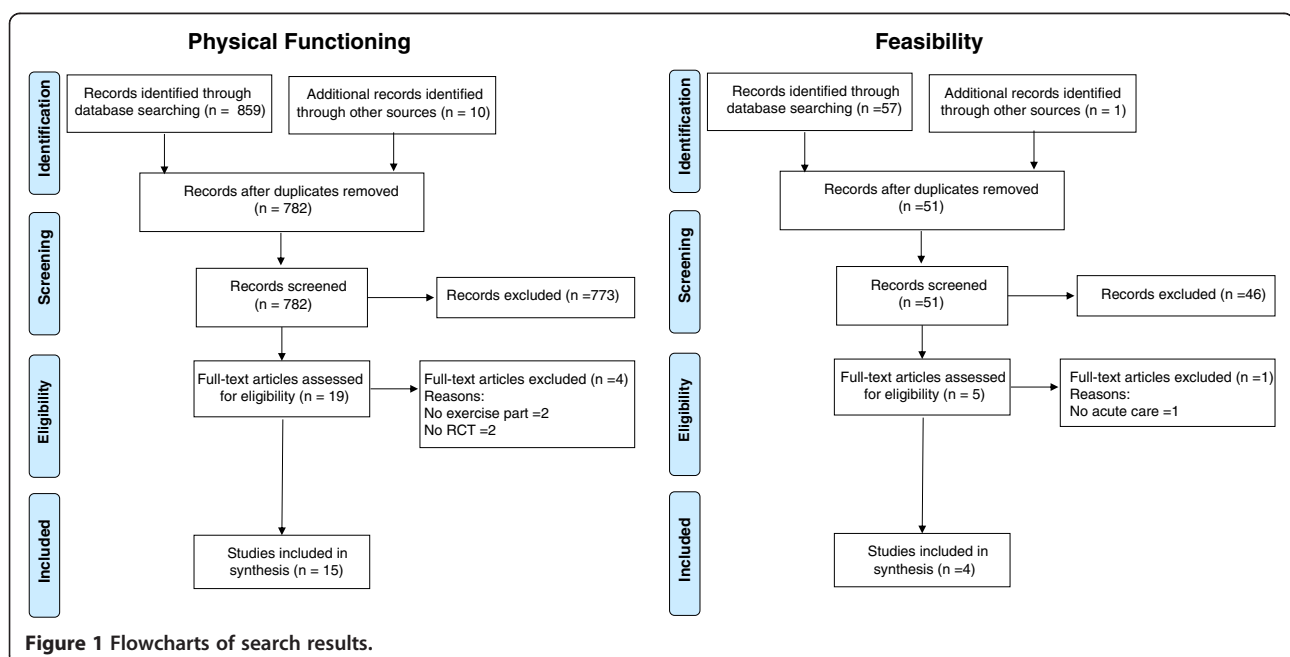


Table 1 Methodological quality scores on the Delphi scale for each RCT study

Study	Randomized	Treatment allocation concealed	Groups similar at baseline	Eligibility criteria specified	Outcome assessor blinded	Care provider blinded	Patient blinded	Variability measures	Intention-to-treat analysis	Total (max 9)
Abizanda [16]	1	1	0	1	1	1	1	1	0	7
Asplund [17]	1	1	1	1	0	0	0	0	0	4
Blanc-Bisson [18]	1	0	1	1	0	0	0	1	1	5
Counsell [19]	1	1	1	1	0	0	0	1	1	6
Courtney [20,21]	1	1	1	1	1	0	0	1	1	7
De Morton [22]	1	0	0	1	0	0	1	1	1	5
Jones [23]	1	1	0	1	0	0	0	1	1	5
Landefeld [24]	1	0	1	1	0	0	0	0	0	3
Laver [14]	1	1	1	1	1	0	0	1	1	7
Nikolaus [25]	1	1	1	1	1	0	0	1	0	6
Saltvedt [26,27]	1	1	1	1	0	0	0	1	0	5
Siebens [28]	1	1	1	1	0	0	0	0	1	5
Slaets [29]	1	1	1	1	0	0	0	0	0	4

studies did not include all patients in the intervention, reasons for exclusion were medical instability [18,22,23], need for specialized care [17,19,22,24], living in nursing homes [19,20,22,23,25,26,28], small survival chance or need for palliative care [18,22,23,25,28], and being diagnosed with an illness causing functional impairment [18,23,28]. Overall, there was a great heterogeneity among the participants between the different studies.

Setting and intervention

Table 2 gives an overview of the settings and interventions of each included randomized controlled trial. The studies were performed on acute geriatric units, geriatric units and medical units of university hospitals, city hospitals and acute care hospitals. Early physical rehabilitation programs could be divided into two categories, (1) multidisciplinary programs with an exercise component and (2) usual care with an additional exercise program. In the review we refer to these categories as multidisciplinary programs and exercise programs, respectively. The main aim of the multidisciplinary programs was to maintain or obtain independent ADL and encourage returning home. Multidisciplinary intervention teams usually consisted of a geriatrician, (geriatric) nurses, social workers, physical therapists and occupational therapists [17,19,24,26,29]. The specific exercise component of the multidisciplinary intervention studies is hardly described, and information on intensity, duration, and frequency of exercises is often lacking. Usual care with an additional exercise program was provided in eight studies [14,16,18,20,22,23,25,28]. The patients in the exercise programs were supervised by allied health assistants, a physiotherapist or an occupational therapist. Patients performed exercises five times a week up to twice daily.

The aim of the exercise programs was predominantly to improving functional outcomes by training strength, mobility, and balance. Strength exercises were progressed by increasing the number of sets and repetitions and walking exercises were progressed in intensity (from slow to moderate pace) or duration (from 5 to 30 minutes). In one study an interactive video gaming program was used to exercise. A Nintendo Wii fit group trained 25 min/day, 5 days/week under supervision of a physical therapist [14]. Some exercise programs supported participants to continue exercise after discharge [20,25,28]. This was achieved by educational materials, by (two or more regular) encouraging phone calls and home visits [20,28], or by a follow-up treatment, twice a week up to twice a day, including physical and occupational therapy [25]. The control groups of the studies generally received usual care according to the general routines of the hospital they were admitted to.

Physical functioning

All included studies provided at least one outcome measure related to physical functioning. Most studies used measures of activities of daily living (ADL) and physical performance to describe physical functioning. Additional information about length of stay and discharge destination were also documented.

Activities of daily living

The included studies gained information on patient's ADL by conducting interviews and (self-administered) questionnaires. Table 3 gives an overview of the used instruments to measure (I)ADL. Eleven of the thirteen studies reported the effects of their intervention on (I)ADL at time of hospital discharge [14,16-19,21-25,29].

Table 2 Setting and study characteristics physical functioning

Study	Population & Setting	Intervention	Time of assessment					
				(I)ADL	Physical Performance	Mortality (%)	LOS (days)	Discharge ICF (%)
Multidisciplinary care with an exercise component								
Asplund 2000 [17]	Intervention (n=190) Mean age 80.9 years 58% female, AGU, UH	Multidisciplinary team, with physical and occupational therapy. Discharge planning and early rehabilitation.	T0 Admission	BI ≥ 19 points	NA	T1 4.2	5.9*	T1 11.6
			T1 Discharge	T0 52%		T2 11.1		T2 11.6
			T2 3 months post-discharge	T2 44%				
	Control (n=223) Mean age 81.0 years 63% female, MU, UH	General medical unit care		BI ≥ 19 points		T1 2.7	7.3*	T1 19.3
				T0 44%		T2 7.6		T2 18.4
				T2 43%				
Counsell 2000 [19]	Intervention (n=767) † Mean age 80 years 60% female, CH	Multidisciplinary team, with daily assessment of physical functioning and protocols to improve self-care and mobility. Early discharge planning.	T0 2 weeks pre-admission	ADL decline	PPME score	T1 2.7	6.1	T1 12.9
			T1 Discharge	T1 30%	T1 5.6*	T2 9.0		T2 10.3
			T2 1 months post-discharge	T2 27%		T3 15.9		T3 8.9
			T3 3 months post-discharge	T3 26%		T4 22.6		T4 7.5
			T4 6 months post-discharge	T4 22%		T5 31.4		T5 6.7
	Control (n=764) † Mean age 79 years 61% female, CH	Usual physician and nursing staff care		ADL decline	PPME score	T1 3.7	6.3	T1 15.6
				T1 34%	T1 5.0*	T2 11.3		T2 10.1
				T2 29%				
				T3 26%		T3 17.4		T3 7.2
				T4 30%				
Landefeld 1995 [24]	Intervention (n=327) Mean age 80.2 years 68% female, MU, CH	Multidisciplinary program, with daily assessment of physical functioning and protocols to improve self-care and mobility	T0 Admission	ADL score:	NA	T1 7.3	7.3	T1 5.8*
			T1 Discharge	T0 3.0		T2 20.8		T2 13.1*
			T2 3 months post-discharge	T1 3.6*				
				T2 4.0				
				IADL score:				
				T0 2.8				
	T1 3.3*							
	T2 3.9							

Table 2 Setting and study characteristics physical functioning (Continued)

	Control (n=324) Mean age 80.1 years 65% female, MU, CH	Usual care services provided by physicians and nurses		ADL score: T0 3.0 T2 3.8 IADL score: T0 2.8 T2 3.8		T1 7.4 T2 19.8	8.3	T1 11.7* T2 18.8*
Saltvedt 2002 [26,27]	Intervention (n=127) † Mean age 81.8 years 81% female, GU, UH	Interdisciplinary program to prevent complications, with early mobilization, rehabilitation and discharge planning	T0 Admission T1 3 months post-discharge T2 6 months post-discharge T3 1 year post-discharge	ADL dependence T1 21% T2 13% T3 25% IADL dependence T1 46% T2 44% T3 45%	NA	T1 11.8* T3 26.8*	15*	NA
	Control (n=127) † Mean age 82.4 years 84% female, MU, UH	Usual care		ADL dependence T1 12% T2 13% T3 23% IADL dependence T1 39% T2 40% T3 44%		T1 27.6* T2 33.9*	7*	
Slaets 1997 [29]	Intervention (n=140) Mean age 82.5 years 67% female, MU, CH	Multidisciplinary program added to the usual care. Geriatrician, physiotherapist and liaison nurse obtained optimal ADL and mobility in 2 hours training a day.	T0 Admission T1 Discharge T2 1 year post-discharge	Improved ADL T1 61%*	Improved mobility T1 48%*	NA	19.7*	T2 18*
	Control (n=97) Mean age 83.2 years 75% female, MU, CH	Usual care: services provided by physicians and nurses.		Improved ADL T1 46%*	Improved mobility T1 44%*		24.8*	T2 27*

Table 2 Setting and study characteristics physical functioning (Continued)

Usual care programs with an exercise intervention								
Abinzanda 2011 [16]	Intervention (n=198) Mean age 83.7 years 56.6% female, AGU, UH	Conventional treatment plus occupational therapy: 5 days per week, 30 - 45 min a day	T0 Admission	55.6% improved ≥ 10 BI points	NA	T1 7.6	9.1	NA
			T1 Discharge					
	Control (n=202) Mean age 83.3 years 56.9% female, AGU, UH	Conventional treatment: medical treatment, nursing care, physical therapy, and social assistance according with the usual practice of the unit.		36.7% improved ≥ 10 BI points		T1 11.9	8.7	
Blanc-Bisson 2008 [18]	Intervention (n=38) Mean age 85.5 years 66% female, AGU, UH	Usual care plus early intensive physical therapy program: start day 1-2, strength training twice a day half an hour, 5 days a week until T1	T0 Admission	Mean Katz index	NA	T1 5.3	T1	NA
			T1 Clinical stability	T0 6.7		T2 7.9	12.6	
			T2 1 month after clinical stability	T1 5.3 T2 4.5				
			Control (n=38) Mean age 85.4 years 79% female, AGU, UH	Usual care: transferred to arm-chair asap. Start day 3-6 walking 3 times a week with human help or without assistance. Physical therapy at home for 1 month	Mean Katz index T0 6.0 T1 4.7 T2 3.0		T1 5.3 T1 5.3	T1 12.6
Courtney 2009 [20,21]	Intervention (n=64) † Mean age 78.1 years 62% female, MU, CH	Individual exercise program and nursing visits, performed daily or several times a week. The intervention continued at home with home visits and regular telephone follow-up by a nurse.	T0 Admission	ADL: Mean score	WIQ distance*	T1 1.6	4.6	NA
			T1 4 weeks post-discharge	index of ADL*	T0 23.54	T2 3.1		
			T2 12 weeks post-discharge	T0 0.36	T1 53.62	T3 3.1		
			T3 24 weeks post-discharge	T1 0.07	T2 54.83			
				T2 0.18	T3 62.89			
				T3 0.16	WIQ speed*			
				IADL: Mean IADL scale*	T0 16.21			
				T0 2.16	T1 41.30			
				T1 1.47	T2 44.62			
				T2 1.27	T3 48.56			
	T3 1.13	WIQ stairs*						
		T0 27.70						
		T1 46.73						
		T2 51.23						
		T3 57.20						

Table 2 Setting and study characteristics physical functioning (Continued)

	Control (n=64) †	Routine care, discharge planning and rehabilitation advice. If necessary, in-home follow-up.		ADL: Mean score index of ADL*	WIQ distance*	T1 4.7	4.7	
	Mean age 79.4 years			T0 0.35	T0 20.22	T2 4.7		
	63% female, MU, CH			T1 0.69	T1 28.90	T3 4.7		
				T2 0.75	T2 21.59			
				T3 1.27	T3 19.93			
				IADL: Mean IADL scale*	WIQ speed*			
				T0 2.62	T0 14.43			
				T1 3.29	T1 22.09			
				T2 3.56	T2 17.89			
				T3 4.33	T3 16.58			
					WIQ stairs*			
					T0 24.12			
					T1 26.06			
					T2 24.40			
					T3 22.18			
De Morton 2007 [22]	Intervention (n=110) †	Usual care plus an individual exercise program. Twice daily, 5 days a week, for 20-30 minutes.	T0 Admission	Mean BI:	Mean TUG (s):	T1 1.8	5.0	T1 18.2
	Mean age 78 years		T1 Discharge	T0 66	T0 35			
	54% female, MU, ACH			T1 79	T1 36			
					Mean FAC:			
					T0 4.0			
					T1 4.8			
	Control (n=126) †	Usual care: daily medical assessment, 24 hour nursing assistance, and allied health service on referral from medical, nursing or other allied health staff.		Mean BI:	Mean TUG (s):	T1 1.6	6.0	T1 20.6
	Mean age 80 years			T0 68	T0 30			
	56% female, MU, ACH			T1 75	T1 26			
					Mean FAC:			
					T0 3.9			
					T1 4.7			

Table 2 Setting and study characteristics physical functioning (Continued)

Jones 2006 [23]	Intervention (n=80) †	Usual care plus an individual exercise program Twice daily for approximately 30 minutes.	T0 Admission T1 Discharge	Mean change mBl: 11 points	Mean change TUG: 5.4 sec*	T1 5.0	9	T1 32.5
	Mean age 81.9 years 54% female, MU, ACH							
	Control (n=80) †	Usual care: medical, nursing and allied health intervention and discharge planning consistent with the patient's diagnosis and resources available on the acute general medical wards.		Mean change mBl: 9 points	Mean change TUG: 1.2 sec*	T1 2.5	11	T1 51.3
	Mean age 82.9 years 61% female, MU, ACH							
Laver 2012 [14]	Intervention (n=22)	Individual interactive video game program (Wii Fit) 25 min/day, 5 days/week supervised by a physiotherapist	T0 Admission T1 Discharge	IADL T0 181 T1 205	TUG T0 38 T1 28	T1 0	12.3	NA
	Mean age 85.2 years 86% female GU, ACH							
	Control (n=22)	Conventional physiotherapy, matching the patients abilities and treatment needs 25 min/day, 5 days/week		IADL T0 141 T1 190	TUG T0 35 T1 29	T1 0	14.95	NA
	Mean age 84.6 years 73% female GU, ACH							
Nikolaus 1999 [25]	Intervention with follow-up (n=181) †	In-hospital and post-discharge follow-up treatment by an interdisciplinary team. Physical or occupational therapy twice a week up to twice a day for 30 min	T0 Admission T1 Discharge T2 1 year post-discharge	Mean Bl score: T0 71.0 T1 91.8 T2 81.2	NA	T2 18.2	33.5*	T1 4.4* T2 16.6
	Mean age 81.4 years Female 73.4%, GU, UH			Mean LB score: T1 5.7 T2 5.6*				
	Intervention without follow-up (n=179) †	In-hospital treatment by an interdisciplinary team, followed by usual care at home		Mean score Bl: T0 71.0 T1 92.6 T2 82.3		T2 16.8	40.7*	T1 7.3* T2 18.4
	Mean age 81.4 years Female 73.4%, GU, UH			Mean LB score: T1 5.5 T2 4.1*				
	Control (n=185) †	Usual care in hospital		Mean score Bl: T0 71.0 T1 91.1 T2 80.9		T2 17.3	42.7*	T1 8.1* T2 22.7
	Mean age 81.4 years Female 73.4%, GU, UH			Mean LB score: T1 5.5 T2 4.3				

Table 2 Setting and study characteristics physical functioning (Continued)

Siebens 2000 [28]	Intervention (n=149) †	Hospital-based exercise program twice a day. Encouragement to continue the program at home	T0 2 weeks pre-admission T1 1 month post-discharge	Mean number of independent IADL T0 5.3 T1 5.1*	Independent walking T0 59.7% T1 64.2%	T1 6.7	12.0	NA
	Mean age 78.2 years 62% female, ACH							
	Control (n=151) †	Usual care		Mean number of IADL independence T0 5.3 T1 4.6*	Independent walking T0 50.3% T1 65.5%	T1 6.6	10.5	
	Mean age 78.5 years 59% female, ACH							

† = included only community dwelling old adults; ADL= Activities of Daily Living; IADL= Instrumental Activities of Daily Living; ICF=Intramural Care Facility; AGU=Acute Geriatric Unit; GU=Geriatric Unit; MU=Medical Unit; UH=University Hospital; CH=City Hospital; ACH=Acute Care Hospital; * = significant (p > 0.05); PPME=Physical Performance and Mobility Examination; WIQ=Walking Impairment Questionnaire; TUG=Timed Up and Go; FAC=Functional ambulation classification; NA=not available.

Table 3 Overview of the instruments used to measure (I)ADL and physical performance

Instrument	Study	Assessment	Score		
			Min	Max	Interpretation
Katz index/ADL index	Courtney [20]	Ability to perform: Bathing, eating, dressing, continence, transfer to toilets and locomotion	0	6	0 independent - 6 dependent
	Bizon-Blanc [18]		0	12	0 independent - 12 dependent
	Counsell and Landefeld [19,24]	Ability to perform: Bathing, dressing, using the toilet, moving from a bed to a chair, and eating	0	5	0 independent – 5 dependent
(modified) Barthel index	Asplund and Salvedt [17,26]	Feeding, urinary and faecal continence, personal toilet, dressing, toilet use, transferring, walking outdoors, climbing stairs and bathing	0	20	1 dependent – 20 independent
	Abizanda, Jones, De Morton, Nicolaus [16,22,23,25]		0	100	0 dependent - 100 independent
Lawton index/IADL index	Nikolaus and Salvedt [25,26]	Ability to use telephone, shopping, food preparation, housekeeping, laundry, mode of transportation, responsibility for medication and ability to handle finances	0	8	0 dependent - 8 independent
	Counsell, Courtney, Landefeld and Siebens [19,20,24,28]	Ability to use telephone, shopping, food preparation, housekeeping, mode of transportation, responsibility for medication and ability to handle finances	0	7	0 dependent - 7 independent
Timed IADL	Laver [14]	The time needed to complete tasks addressing five IADL domains: (1) communication, (2) finance, (3) cooking, (4) shopping, and (5) medicine.			Lower scores indicates greater ability
SIVIS dependency scales	Sleats [29]	SIVIS independency scale: 20 questions relating to orientation, communication, mobility, transfers, ADL, continence, catheter use, and decubitus			NA
Functional Independence Measure (FIM)	Laver and Siebens [14,28]	Measures the level of a patient's disability and indicates how much assistance is required for the individual to carry out activities of daily living: Eating, Grooming, Bathing, Upper and lower body dressing, Toileting, Bladder and bowel management, Bed to chair transfer, Toilet and shower transfer, Locomotion, Stairs, Cognitive comprehension, Expression, Social interaction, Problem solving, Memory	18	126	18 dependent – 126 independent
Walking Impairment Questionnaire (WIQ)	Courtney [20]	Walking distance, walking speed and climbing stairs	0	100	Higher scores indicates greater ability
Timed Up and Go (TUG)	Jones, Laver, De Morton [14,22,23]	Time taken for the patient to rise from a chair, walk 3 m, turn and walk back to the chair			Lower scores indicates greater ability
Functional Ambulation Classification	De Morton [22]	Ability to ambulate over a 10 foot distance and 4 m length of foam	0	6	0 dependent - 6 independent
Physical activity scale	Siebens [28]	Questionnaire about walking ¼ mile, walking up 10 steps, crouching/kneeling, lifting/carrying 10 lbs			NA
Mobility	Counsell [19]	Walking to a table, walking inside the house, walking a block, walking uphill or upstairs, and running a short distance			NA
Physical Performance and Mobility Examination	Counsell [19]	Bed mobility, transfer skills, multiple stands, standing balance, step up one step and timed 6 m walk	0	6	0 dependent – 6 independent
Short Physical Performance Battery	Laver [14]	Three standing balance measures (tandem, semi-tandem, and side-by-side stands), five continuous chair stands, and a 2.44-meter walk.	0	12	0 dependent – 12 independent
Modified Berg Balance Scale	Laver [14]				NA

NA=Not available.

Two multidisciplinary programs found that patients in exercise group compared to the patients in usual care group significantly improved more and worsened less in the number of basic ADL activities they were able to perform [24,29]. The other studies did not find a significant group difference in ADL at time of discharge. However, one study with an exercise intervention found a significant interaction effect between group and admission scores on the modified Barthel index meaning that patients with a low admission score who received an exercise intervention showed greater improvement in ADL than those patients who received only usual care [23]. Two studies reported a ceiling effect for the Barthel index and a floor effect for the Katz index [22,23]. Remaining studies did not find a significant difference on ADL between early physical rehabilitation programs and usual care (see Table 2).

Of the eight studies that reported follow-up data on (I)ADL [17-20,24-26,28] only the three studies with an exercise intervention that provided patients with follow-up treatment after hospital discharge reported larger improvements in the exercise group than in the usual care group after 1, 6 and 12 months [20,25,28]. One study that did not provide patients with follow-up treatment also found a positive effect of the intervention on ADL at 3 months post-discharge. However, this study included patients who died by assigning them a score of zero, whereas the mortality rate was higher in the usual care group than the multidisciplinary group [26].

Physical performance

Seven studies reported measures of physical performance; Table 3 gives an overview of the used measurement instruments [14,19,20,22,23,28,29]. Three (2 multidisciplinary programs and 1 exercise programs) of the five studies describing physical performance at time of admission and discharge found that the intervention groups improved more or declined less than the usual care groups [19,23,29]. However, for one study the difference in the Timed Up and Go (TUG) was not significant after adjusting for confounders such as patient characteristics, admission modified Barthel Index, comorbidity, and mental scores [23].

For the TUG a floor effect was found. In one study, almost 40% of the patients were physically unable to perform the TUG at both admission and discharge [23], whereas in another study 23% of all patients were unable to perform the TUG at admission to the hospital [22].

Two studies reported follow-up results on physical performance, but the results are ambiguous [20,28]. One study [28] reported no significant difference between the patients in the exercise group and in the usual care group in the change in physical performance scores obtained 2 weeks before admission and one month after

discharge. Conversely, the other study [20] reports that the exercise group had greater improvement over time (up to 24 weeks after discharge) in walking distance, walking speed and stair climbing. Similar contradicting results were found on more general outcome measures of physical functioning, provided by a health questionnaire that contained physical well-being and physical activity. No group differences were found for the National Health Survey Physical Activity Scale at one month follow-up [28], while the other study found that the exercise group scored higher than the usual care group on physical health related quality of life at 4, 12, and 24 weeks after discharge [21]. In short, follow-up results on physical performance are contradictory. Nevertheless, at time of discharge most studies show a greater improvement for patients in the multidisciplinary and exercise group than for the patients in the usual care group.

Length of stay and discharge destination

All included randomized controlled trials reported about the length of stay, which varied between the 4.7 days and 42.7 days. Four studies (three multidisciplinary programs) reported a significant difference shorter length of stay of the exercise group than for the usual care group [17,25,27,29].

From the seven studies [17,19,22-25,29] that reported on discharge destination, five studies found that a higher proportion of patients in the early physical rehabilitation group than in the usual care group were discharged home, instead of being transferred to additional (sub-acute) hospital treatment or to institutionalized care, however, results were significant in three studies (Table 2). Two multidisciplinary programs found that respectively 14% and 18% of the patients in the multidisciplinary group were discharged to a long-term care institution opposed to 22% and 27% of usual care patients [24,29]. The third study, an exercise intervention, included only patients who had lived at home before admission and found that 4% of the patients in the exercise group and 8% of the patients in the usual care group were discharged to long-term care institutions [25].

Feasibility

Feasibility of early physical rehabilitation programs, was explicitly assessed in four studies (Table 4) comparing usual care with an exercise intervention program [14,30-32]. In addition included randomized controlled trials with an exercise program reported on enrolment (n=3), adherence rate (n=2) and adverse events (n=5), while multidisciplinary studies reported on enrolment (n=3) only.

Subjects enrolled in the studies explicitly assessing feasibility were respectively above the age of 60 or 70. The most common exclusion criteria were severe

Table 4 Setting and study characteristics feasibility

Study	Population & setting	Intervention	Feasibility
Brown 2006 [30]	Intervention (n=7) Mean age 70.2 years, 0% female	Exercise sessions twice a day, 7 days a week. After discharge 20-30 min walk each day and resistance exercise every other day	n=605 admitted, n=76 included n=66 declined participation
	Control (n=2) Mean age 70.2 years, 0% female	Usual care which included physical therapy if a consult was initiated by the physician	
Mallery 2003 [31]	Intervention (n=19) Mean age 82.7 years 74% female, GU, UH	Usual care plus resistance exercise 3 times per week, 30-40 min, assisted by a physiotherapist	n=395 admitted, n=39 included Participation 71%, Adherence 63% No adverse events
	Control (n=20) Mean age 81.4 years 45% female, GU, UH	Usual care plus passive range of motion training 3 times per week, 30-40 min, assisted by a physiotherapist	Participation 96%, Adherence 95% No adverse events
Nolan 2008 [32]	Intervention (n=196) Mean age 83.6 years, 68% female, GU, UH	Participated in the Functional Maintenance Exercise Program, 6 times per week, 30 min	n=1021 admitted, n= 220 included 33 withdrawn
	Control (n=24) Mean age 85.4 years 67% female, GU, UH	Usual care with usual physiotherapy	
Laver 2012 [14]	Intervention (n=22) Mean age 85.2 years 86% female GU, ACH	Individual interactive video game program (Wii Fit) 25 min/day, 5 days/week supervised by a physiotherapist	n=235 admitted, n=44 included 90% adherence rate No adverse events
	Control (n=22) Mean age 84.6 years 73% female GU, ACH	Conventional physiotherapy, matching the patients abilities and treatment needs 25 min/day, 5 days/week	91% adherence rate 1 adverse event, conscious collapse

GU=Geriatric Unit; UH=University Hospital.

impairments in physical performance and cognition, requiring palliative care, expected short length of stay, and medical instability. One study specifically targeted frail patients that were at risk of functional decline [32].

Feasibility was measured quantifying patients enrolment, patient adherence to the program and at patient's safety in the context of the exercise program. Nine of the 11 studies found that between the 14% and 48% of the admitted patients met the inclusion to be enrolled in the programs, and between 3 and 19% of the patients were not willing to participate [14,17,19,22-24,28,31,32]. In general patients not willing to participate stated that they did not feel like exercising or that they did not believe they could exercise. They felt unwell and/or were scared that exercising would make them feel worse.

In one study [30] only 2% of all admitted patients were included. Of the 76 patients that met the inclusion criteria only 10 consented to participating while 87% of the eligible patients refused to take part in the program. In fact none of the included patients were able to start with the exercise program. Reasons for not participating in the exercise program were not of a physical nature.

Instead, patients were discharged before therapy could begin or were unavailable due to diagnostic tests or appointments with healthcare professionals.

Adherence rates were fairly high between the 60% and 90% [14,20,31,32]. The most common reasons for dropping out of the intervention programs were early discharge, being transferred to intensive or palliative care, being medically unstable, and death [17-19,22,23,28,32].

A final measure of feasibility is patient safety during the exercise program. One feasibility study and six RCT studies included in this review reported on potential side effects such as injuries, accidents, and more specifically, fall incidents, related to participating in the early physical rehabilitation programs [14,16,18,20,23,28,31]. None of the studies found any differences in the number of incidents between the exercise groups and usual care groups.

Discussion

The first aim of this review was to evaluate the effect of early physical rehabilitation programs for geriatric hospitalized patients on physical functioning. A total of 15

articles, reporting on 13 studies, were included that provided early physical rehabilitation programs in a hospital setting. The present review shows that early physical rehabilitation programs might be beneficial to prevent rapid decline in physical functioning.

A classification could be made between multidisciplinary programs with an exercise component and usual care with an exercise component. Multidisciplinary programs reduced the length of stay for patients in the exercise groups compared to the patients receiving usual care. Additionally, the patients in the multidisciplinary programs were less likely to be discharged to a nursing home or other forms of institutionalized care than patients in the usual care group. The usual care programs with an exercise intervention had the main aim to improve functional outcomes, some of the studies showed indeed an improvement on ADL and physical performance.

The two types of exercise interventions, e.g. multidisciplinary programs with an exercise component and usual care with an exercise component, did not find different results in physical functioning at time of discharge. At time of discharge, results on physical performance were to some extent contradicting, but the majority of the included studies showed that patients in the exercise groups had better ADL and physical performance than patients in the usual care groups, although those results were not always significant. Follow-up results on ADL and physical performance showed that persistent positive effects were mainly found in studies that provided patients with continuous interventions after hospital discharge. The studies that provided patients with only in-hospital exercise interventions found little or no effect on ADL and physical performance at follow-up examinations. These results are in line with other studies that investigate the effects of care in geriatric units and of inpatient rehabilitation for geriatric patients on functional parameters [10,33]. The effects of only in-hospital interventions were clearly positive at time of discharge but were greatly reduced during follow-up. These results suggest that the recovery of patients could further benefit from a community based or in-home intervention programs which build on in-hospital programs. Such programs could consist of physical or occupational therapy. In addition, the present review shows in home visits and follow-up telephone calls might be effective for adherence for home-based exercise [20]. Further research is needed to clarify the effects and feasibility of community based and in-home intervention programs in old adults after hospital discharge.

The studies presented in this review included very heterogeneous groups. Half of all studies excluded nursing home patients. Probably, due to the aim of those studies to facilitate discharge home. The studies in this review that targeted frail older patients, patients with increased risk for readmission or patients with a high risk for

nursing home admission found positive effects of an exercise program on ADL, length of stay and discharge destination [20,25,26]. This result indicates that frail old adults and nursing home patients may benefit from early rehabilitation. Targeting the right population for early physical rehabilitation may be seen as crucial.

The outcomes with regard to physical functioning were measured by a variety of instruments and at different points in time, some of these instruments demonstrated floor and ceiling effects. Floor and ceiling effects could influence the outcomes and distort the results. There were also cases in which information could only be collected with the help of close relatives and caregivers, because relevant information could not be obtained from the patients themselves. The limitations of the current used measurement instruments implies that there might be a need for more sensitive instruments that measure aspects of physical functioning in hospitalized old adults.

Finally, the second aim of this review was to investigate the feasibility of early physical rehabilitation programs for acute ill older patients. The early physical rehabilitation programs must be safe to perform and may not cause high numbers of drop outs. There were four studies identified reporting on the feasibility of in-hospital exercise programs [14,30-32]. Additionally, a part of the randomized controlled trials, used to determine the effect on physical functioning, reported also on some feasibility points. Several studies included in this review affirmed the safety of early rehabilitation programs. Patients in the early physical rehabilitation groups were not more often injured, nor did they experience more adverse events or falls than usual care patients. Results on patient recruitment were contradictory and should be interpreted with care due to the limited number of available studies. Adherence rates were high for most studies. Patient as well as the intervention provider's satisfaction was higher when patients were treated with a early physical rehabilitation program instead of usual care [19]. There was one study that encountered difficulties in recruiting patients and was unable to have any patients participate in the exercise program at all [30]. Patients refused to participate or were unavailable at scheduled time of therapy. One of the greatest barriers in the implementation of intervention research, according to the opinion of nurses, was a lack of awareness and knowledge [34]. Equally important in this regard were difficulties in the cooperation of interdisciplinary team members [34]. Education of staff and patients about the safety and the benefits of early physical rehabilitation as well as regular team conferences that improve coordination might help to increase the success rate of intervention programs with regard to participate.

Limitations

The total number of included studies in this review is small and the methodological quality for most studies was moderate. Most articles scored particularly low on blinding the assessor, the care provider, and the participant. However, it may be regarded as almost impossible to assure blinding in the context of early physical rehabilitative interventions. One of the major limitations of the included studies lies with the poor descriptions of exercise in early physical rehabilitation programs. Since there is often no clear description on type, duration, frequency, and intensity of exercises that patients receive. Furthermore, because many multidisciplinary programs are focused on outcomes beyond functionality, e.g. early discharge planning, it is difficult to determine what the effect of the exercise component on physical functioning is in this setting. Future research should provide quantification of exercises that older patients perform during their hospital stay, so that there would be a clearer view on the dose-response relationship of physical activity and functional outcomes.

Conclusion

Early physical rehabilitation programs for acutely hospitalized old adults have the potential to improve physical functioning, and also to prevent patients from being discharged to nursing homes or other forms of institutionalized care. Interventions including a follow-up program after hospital discharge increase the chance of maintaining positive effects on functionality for longer periods of time. Early physical rehabilitation for acutely hospitalized older adults seem to be safe to execute in terms of adverse events such as falls or other injuries, but recruiting the most suitable patients and getting them to participate regularly in the program can be a challenge. Therefore, the commitment and collaboration of staff is of great importance. Further research is needed to quantify the physical activity of patients in early physical rehabilitation programs and to determine the effects and feasibility of community-based and in-home exercise programs.

Competing interests

The authors declare that they have no proprietary, financial, professional, or other personal competing interests of any nature or kind.

Authors' contribution

Nienke Kosse and Alisa Dutmer managed the review process and wrote the draft of the full manuscript together with Claudine Lamoth. All authors critically revised the manuscript and approved the final version.

Acknowledgements

This review is part of the project "Telemedicine & Personalized Care – project fall prevention" and co-financed, in the context of the INTERREG IV A Program Deutschland-Netherlands, by the European Regional Development Fund (ERDF) and the Ministries of Economic Affairs of the Netherlands and the German states of Nordrhein-Westfalen and Niedersachsen.

Author details

¹University of Groningen, University Medical Center Groningen, Center for Human Movement Sciences, Groningen, The Netherlands. ²Geriatrics Center Oldenburg, Carl von Ossietzky Universität Oldenburg, Oldenburg, Germany.

Received: 15 May 2013 Accepted: 8 October 2013

Published: 10 October 2013

References

1. OECD: *Health at a Glance: Europe 2012*. OECD Publishing; 2012 [http://dx.doi.org/10.1787/9789264183869-en].
2. Creditor MC: **Hazards of Hospitalization of the Elderly**. *Ann Intern Med* 1993, **118**(3):219.
3. Sager MA, Franke T, Inouye SK, Landefeld CS, Morgan TM, Rudberg MA, Sebens H, Winograd CH: **Functional outcomes of acute medical illness and hospitalization in older persons**. *Arch Intern Med* 1996, **156**(6):645–652.
4. Covinsky KE, Palmer RM, Fortinsky RH, Counsell SR, Stewart AL, Kresevic D, Burant CJ, Landefeld CS: **Loss of independence in activities of daily living in older adults hospitalized with medical illnesses: increased vulnerability with age**. *J Am Geriatr Soc* 2003, **51**(4):451–458.
5. McVey LJ, Becker PM, Saltz CC, Feussner JR, Cohen HJ: **Effect of a geriatric consultation team on functional status of elderly hospitalized patients**. *Ann Intern Med* 1989, **110**(1):79.
6. Fortinsky RH, Covinsky KE, Palmer RM, Landefeld CS: **Effects of functional status changes before and during hospitalization on nursing home admission of older adults**. *J Gerontol A Biol Sci Med Sci* 1999, **54**(10):M521–M526.
7. Rudberg MA, Sager MA, Zhang J: **Risk factors for nursing home use after hospitalization for medical illness**. *J Gerontol A Biol Sci Med Sci* 1996, **51**(5): M189–M194.
8. Kortebein P, Symons TB, Ferrando A, Paddon-Jones D, Ronsen O, Protas E, Conger S, Lombeida J, Wolfe R, Evans WJ: **Functional impact of 10 days of bed rest in healthy older adults**. *J Gerontol A Biol Sci Med Sci* 2008, **63**(10):1076–1081.
9. Mendez-Tellez PA, Nusr R, Feldman D, Needham DM: **Early physical rehabilitation in the ICU: a review for the neurohospitalist**. *The Neurohospitalist* 2012, **2**(3):96–105.
10. Baztan JJ, Suarez-Garcia FM, Lopez-Arrieta J, Rodriguez-Manas L, Rodriguez-Artalejo F: **Effectiveness of acute geriatric units on functional decline, living at home, and case fatality among older patients admitted to hospital for acute medical disorders: meta-analysis**. *BMJ* 2009, **338**:b50.
11. de Morton NA, Keating JL, Jeffs K: **The effect of exercise on outcomes for older acute medical inpatients compared with control or alternative treatments: a systematic review of randomized controlled trials**. *Clin Rehabil* 2007, **21**(1):3–16.
12. Verhagen AP, de Vet HC, de Bie RA, Kessels AG, Boers M, Bouter LM, Knipschild PG: **The Delphi list: a criteria list for quality assessment of randomized clinical trials for conducting systematic reviews developed by Delphi consensus**. *J Clin Epidemiol* 1998, **51**(12):1235–1241.
13. Olivo SA, Macedo LG, Gadotti IC, Fuentes J, Stanton T, Magee DJ: **Scales to assess the quality of randomized controlled trials: a systematic review**. *Phys Ther* 2008, **88**(2):156–175.
14. Laver K, George S, Ratcliffe J, Quinn S, Whitehead C, Davies O, Crotty M: **Use of an interactive video gaming program compared with conventional physiotherapy for hospitalised older adults: a feasibility trial**. *Disabil Rehabil* 2012, **34**(21):1802–1808.
15. Liberati A, Altman DG, Tetzlaff J, Mulrow C, Gotzsche PC, Ioannidis JP, Clarke M, Devereaux PJ, Kleijnen J, Moher D: **The PRISMA statement for reporting systematic reviews and meta-analyses of studies that evaluate health care interventions: explanation and elaboration**. *J Clin Epidemiol* 2009, **62**(10):e1–e34.
16. Abizanda P, Leon M, Dominguez-Martin L, Lozano-Berrio V, Romero L, Luengo C, Sanchez-Jurado PM, Martin-Sebastian E: **Effects of a short-term occupational therapy intervention in an acute geriatric unit. A randomized clinical trial**. *Maturitas* 2011, **69**(3):273–278.
17. Asplund K, Gustafson Y, Jacobsson C, Bucht G, Wahlin A, Peterson J, Blom JO, Angquist KA: **Geriatric-based versus general wards for older acute medical patients: a randomized comparison of outcomes and use of resources**. *J Am Geriatr Soc* 2000, **48**(11):1381–1388.
18. Blanc-Bisson C, Dechamps A, Gouspillou G, Dehail P, Bourdel-Marchasson I: **A randomized controlled trial on early physiotherapy intervention versus**

- usual care in acute care unit for elderly: potential benefits in light of dietary intakes. *J Nutr Health Aging* 2008, **12**(6):395–399.
19. Counsell SR, Holder CM, Liebenauer LL, Palmer RM, Fortinsky RH, Kresevic DM, Quinn LM, Allen KR, Covinsky KE, Landefeld CS: **Effects of a multicomponent intervention on functional outcomes and process of care in hospitalized older patients: a randomized controlled trial of Acute Care for Elders (ACE) in a community hospital.** *J Am Geriatr Soc* 2000, **48**(12):1572–1581.
 20. Courtney MD, Edwards HE, Chang AM, Parker AW, Finlayson K, Bradbury C, Nielsen Z: **Improved functional ability and independence in activities of daily living for older adults at high risk of hospital readmission: a randomized controlled trial.** *J Eval Clin Pract* 2012, **18**(1):128–134.
 21. Courtney M, Edwards H, Chang A, Parker A, Finlayson K, Hamilton K: **Fewer emergency readmissions and better quality of life for older adults at risk of hospital readmission: a randomized controlled trial to determine the effectiveness of a 24-week exercise and telephone follow-up program.** *J Am Geriatr Soc* 2009, **57**(3):395–402.
 22. de Morton NA, Keating JL, Berlowitz DJ, Jackson B, Lim WK: **Additional exercise does not change hospital or patient outcomes in older medical patients: a controlled clinical trial.** *Aust J Physiother* 2007, **53**(2):105–111.
 23. Jones CT, Lowe AJ, MacGregor L, Brand CA, Tweddle N, Russell DM: **A randomised controlled trial of an exercise intervention to reduce functional decline and health service utilisation in the hospitalised elderly.** *Australas J Ageing* 2006, **25**(3):126–133.
 24. Landefeld CS, Palmer RM, Kresevic DM, Fortinsky RH, Kowal J: **A randomized trial of care in a hospital medical unit especially designed to improve the functional outcomes of acutely ill older patients.** *N Engl J Med* 1995, **332**(20):1338–1344.
 25. Nikolaus T, Specht-Leible N, Bach M, Oster P, Schlierf G: **A randomized trial of comprehensive geriatric assessment and home intervention in the care of hospitalized patients.** *Age Ageing* 1999, **28**(6):543–550.
 26. Saltvedt I, Jordhoy M, Opdahl Mo ES, Fayers P, Kaasa S, Sletvold O: **Randomised trial of in-hospital geriatric intervention: impact on function and morale.** *Gerontology* 2006, **52**(4):223–230.
 27. Saltvedt I, Mo ES, Fayers P, Kaasa S, Sletvold O: **Reduced mortality in treating acutely sick, frail older patients in a geriatric evaluation and management unit. A prospective randomized trial.** *J Am Geriatr Soc* 2002, **50**(5):792–798.
 28. Siebens H, Aronow H, Edwards D, Ghasemi Z: **A randomized controlled trial of exercise to improve outcomes of acute hospitalization in older adults.** *J Am Geriatr Soc* 2000, **48**(12):1545–1552.
 29. Slaets JP, Kauffmann RH, Duivenvoorden HJ, Pelemans W, Schudel WJ: **A randomized trial of geriatric liaison intervention in elderly medical inpatients.** *Psychosom Med* 1997, **59**(6):585–591.
 30. Brown CJ, Peel C, Bamman MM, Allman RM: **Exercise program implementation proves not feasible during acute care hospitalization.** *J Rehabil Res Dev* 2006, **43**(7):939–946.
 31. Mallery LH, MacDonald EA, Hubble-Kozey CL, Earl ME, Rockwood K, MacKnight C: **The feasibility of performing resistance exercise with acutely ill hospitalized older adults.** *BMC Geriatr* 2003, **3**:3.
 32. Nolan J, Thomas S: **Targeted individual exercise programmes for older medical patients are feasible, and may change hospital and patient outcomes: a service improvement project.** *BMC Health Serv Res* 2008, **8**:250.
 33. Bachmann S, Finger C, Huss A, Egger M, Stuck AE, Clough-Gorr KM: **Inpatient rehabilitation specifically designed for geriatric patients: systematic review and meta-analysis of randomised controlled trials.** *BMJ* 2010, **340**:c1718.
 34. Hutchinson AM, Johnston L: **Bridging the divide: a survey of nurses' opinions regarding barriers to, and facilitators of, research utilization in the practice setting.** *J Clin Nurs* 2004, **13**(3):304–315.

doi:10.1186/1471-2318-13-107

Cite this article as: Kosse et al.: Effectiveness and feasibility of early physical rehabilitation programs for geriatric hospitalized patients: a systematic review. *BMC Geriatrics* 2013 **13**:107.

Submit your next manuscript to BioMed Central and take full advantage of:

- Convenient online submission
- Thorough peer review
- No space constraints or color figure charges
- Immediate publication on acceptance
- Inclusion in PubMed, CAS, Scopus and Google Scholar
- Research which is freely available for redistribution

Submit your manuscript at
www.biomedcentral.com/submit

